

WING P4.2 RESCUE

inflatableolutions.com

WING
I N F L A T A B L E S

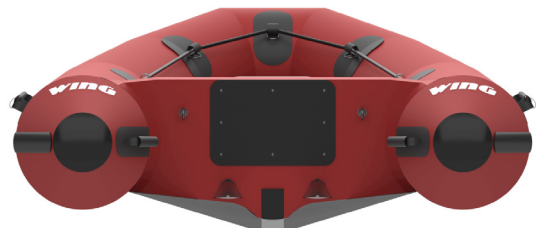
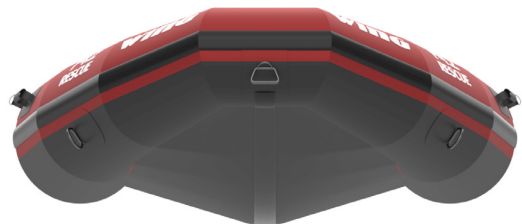
Built specifically for Swift Water Rescue, the P4.2 Rescue allows state and local municipalities to enjoy all of the manufacturing benefits of MilSpec Standards.

The base craft features no top-side lifeline (for body rescue), internal grab lifelines, four main carry handles, and a fifth bow carry handle. The transom has two towing and two lifting eyebolts. Users can tow a fully loaded craft (2000 lbs) using two large D-rings on the underside bow of the main buoyance tubes.

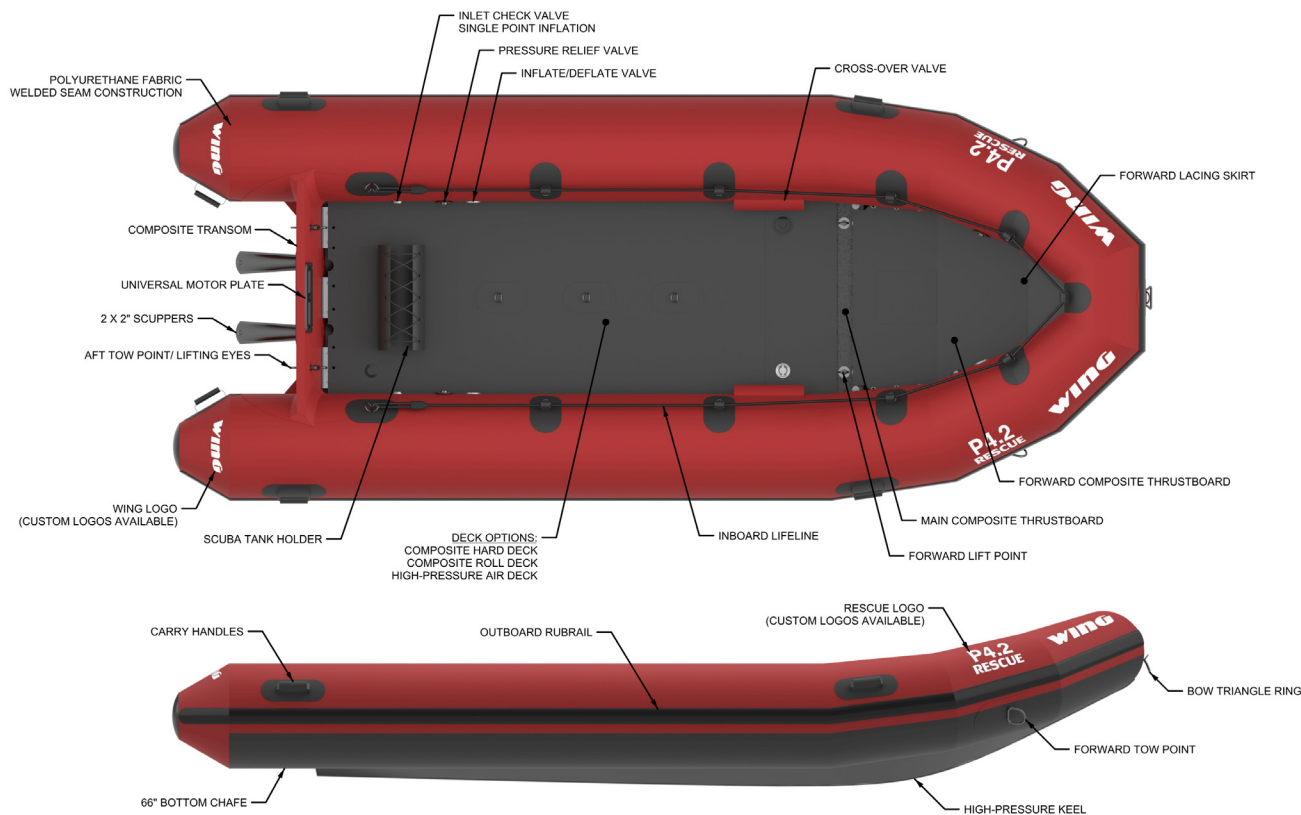
Attachment systems, logos and colors are customizable to ensure the craft meets the mission need. End-users may choose from several color options—black, red, orange, blue, grey, and drab green and any department name or logo can be added to the side. All components are composite, marine grade aluminum or 316 passivated stainless steel. The deck comes in a composite hard deck, roll deck, and drop stitch air deck.

Craft Features

- We design and manufacture the Wing P Series craft to meet end-user operational requirements. Understanding their need lets us build craft specific to the mission.
- All Wing products are manufactured in the US using US-sourced materials at our ISO-9001-certified factory in Arcata, CA. No other inflatable craft meets these standards.
- Wing uses proprietary polyurethane-coated polyester material, which has three times the puncture and abrasion resistance of Hypalon—the current material used for inflatable craft manufacturing. Special Operations Maritime Forces put forward a technical memorandum for Ship Systems and Programs Directorate (Document CDNSWC-TM-20-93-78), which compares Hypalon (CSM) and polyurethane-coated fabrics (PU).
- Total Lifecycle Cost: With superior welded—not glued—fabric, the craft's lifespan may exceed ten years when properly maintained. All components are composite, marine grade aluminum or 316 passivated stainless steel. Wing also offers an unheard-of five-year warranty with each craft. With top-of-the-line materials and manufacturing processes, a five-year warranty and a long-term lifespan, the Wing P Series craft will outlast all others on the market.
- Aliphatic TPU and UV Enhancement: Not only are all Wing P Series craft built with aliphatic polyurethane fabric, which is lighter, more stable and offers enhanced UV protection, but they also have a UV-enhanced Flex Tough coating. This coating comes in several colors, allowing the end-user to pick a specific color for their mission set.
- Hull Shape: Sharper bow shape, truncated tail cones, and increased dead rise and buoyancy tube pressure all improve the performance of the P Series craft over other inflatable hull types. Operational missions, including swift water rescue, over-the-horizon transits, surf passages, shallow water operations and closed quarter maneuvers, benefit from the P series craft hull design.
- Tracking Strakes vs. Speed Tubes: Current P Series craft have tracking strakes—triangular profiles on the underside of the port and starboard main buoyancy tubes—instead of speed tubes, an older technology that allows a lower-pressure conventional craft to have a marginal amount of additional buoyancy. The improved Wing P Series hull design increases the craft's performance without unnecessarily adding lower buoyancy tubes.



WING P4.2 RESCUE



DESCRIPTION	P4.2 RESCUE
Deck Options	Composite Hard Deck, Roll Deck, Drop Stitch Air Deck
Overall Length	13'9" (4.2m)
Overall Beam	5'9" (1.75m)
Internal Length	10'9" (3.27m)
Internal Beam	2'8" (.81m)
Tube Diameter	18" (.46m)
Number of Chambers	3 + Keel
Usable Deck Space	27 ft2 (2.5sq m)
Craft Weight - Empty	149lbs (68kg)
Craft Weight with Drop Stitch Air Deck	209lbs (95kg)
Craft Weight with Aluminum Slats	226lbs (103kg)
Craft Weight with Composite Slats	242lbs (110kg)
Craft Weight with Full Hard Deck	242lbs (110kg)
Folded Dimensions	25"x25"x52" .63m*.63m*1.32m
Transom Height	20" (.5m)
Max Payload	2035lbs (923kg)
Person Capacity	6
Max HP Rating (Hard Deck/Roll Deck)	(50HP/30HP)
Max Engine Weight	240lbs (109kg)
Draft w/ Load	10" (.25m)
IMCI - CE Certified	

Additional Information



Technical Resources



Contact
inflatablesolutions.com